

ARTICLE

Open Access

# Modeling the optical properties of twisted bilayer photonic crystals

Haoning Tang<sup>1</sup>, Fan Du<sup>1</sup>, Stephen Carr<sup>2</sup>, Clayton DeVault<sup>1</sup>, Olivia Mello<sup>1</sup> and Eric Mazur<sup>1</sup>✉

## Abstract

We demonstrate a photonic analog of twisted bilayer graphene that has ultra-flat photonic bands and exhibits extreme slow-light behavior. Our twisted bilayer photonic device, which has an operating wavelength in the C-band of the telecom window, uses two crystalline silicon photonic crystal slabs separated by a methyl methacrylate tunneling layer. We numerically determine the magic angle using a finite-element method and the corresponding photonic band structure, which exhibits a flat band over the entire Brillouin zone. This flat band causes the group velocity to approach zero and introduces light localization, which enhances the electromagnetic field at the expense of bandwidth. Using our original plane-wave continuum model, we find that the photonic system has a larger band asymmetry. The band structure can easily be engineered by adjusting the device geometry, giving significant freedom in the design of devices. Our work provides a fundamental understanding of the photonic properties of twisted bilayer photonic crystals and opens the door to the nanoscale-based enhancement of nonlinear effects.

## Introduction

Over the past decade, the stacking and twisting of two-dimensional (2D) materials have led to the development of novel materials with remarkable electronic properties. For example, in twisted bilayer graphene (TBG), an engineered material consisting of two stacked layers of graphene that are rotated relative to each other, at the so-called magic angle of  $\theta = 1.1^\circ$ , the Fermi velocity drops to zero and the energy bands near the Fermi energy become flat<sup>1</sup>. These flat bands have high effective mass and half-filled correlated insulating states, resulting in superconductivity due to the formation of moiré superlattices and Dirac cone hybridization<sup>2,3</sup>. Exploring these unusual phenomena is central in the developing field of quantum twistrionics<sup>4,5</sup>. The concept of twistrionics has been extended to include the study of nano-light properties in materials like TBG and twisted  $\alpha$ -MoO<sub>3</sub><sup>6–9</sup>. Recently, it was shown that applying the ideas of twistrionics to both

1D and 2D photonic moiré lattices in dielectric nanophotonic materials leads to slow-light effect<sup>10,11</sup>, light localization/delocalization phenomena<sup>12</sup>, and tunable resonant chiral behavior<sup>13</sup>. However, the connection between atomic twistrionics and its nanoscale photonic analog has not been thoroughly explored.

Many concepts in condensed matter theory have photonic analogs. For example, photonic systems with non-trivial topological invariants are the photonic analog of the anomalous quantum Hall effect and the anomalous quantum spin hall effect<sup>14–22</sup>. The periodic dielectric lattice of honeycomb lattice photonic crystals with “artificial atoms” (the unit cell in the dielectric structure) is analogous to the hexagonal atomic lattice of graphene. Indeed, these materials have been shown to give rise to topological photonics<sup>23–29</sup>. In this context, it is natural to expect two layers of twisted honeycomb photonic crystal slabs to have similar physics as TBG. Yet, while the microscale analog to TBG has recently been demonstrated through phononic crystals and microwave photonic crystals<sup>30,31</sup>, and while tunable light properties have been observed in metamaterials with moiré patterns<sup>32–36</sup>, a nanoscale photonic band structure similar to the band

Correspondence: Eric Mazur ([mazur@seas.harvard.edu](mailto:mazur@seas.harvard.edu))

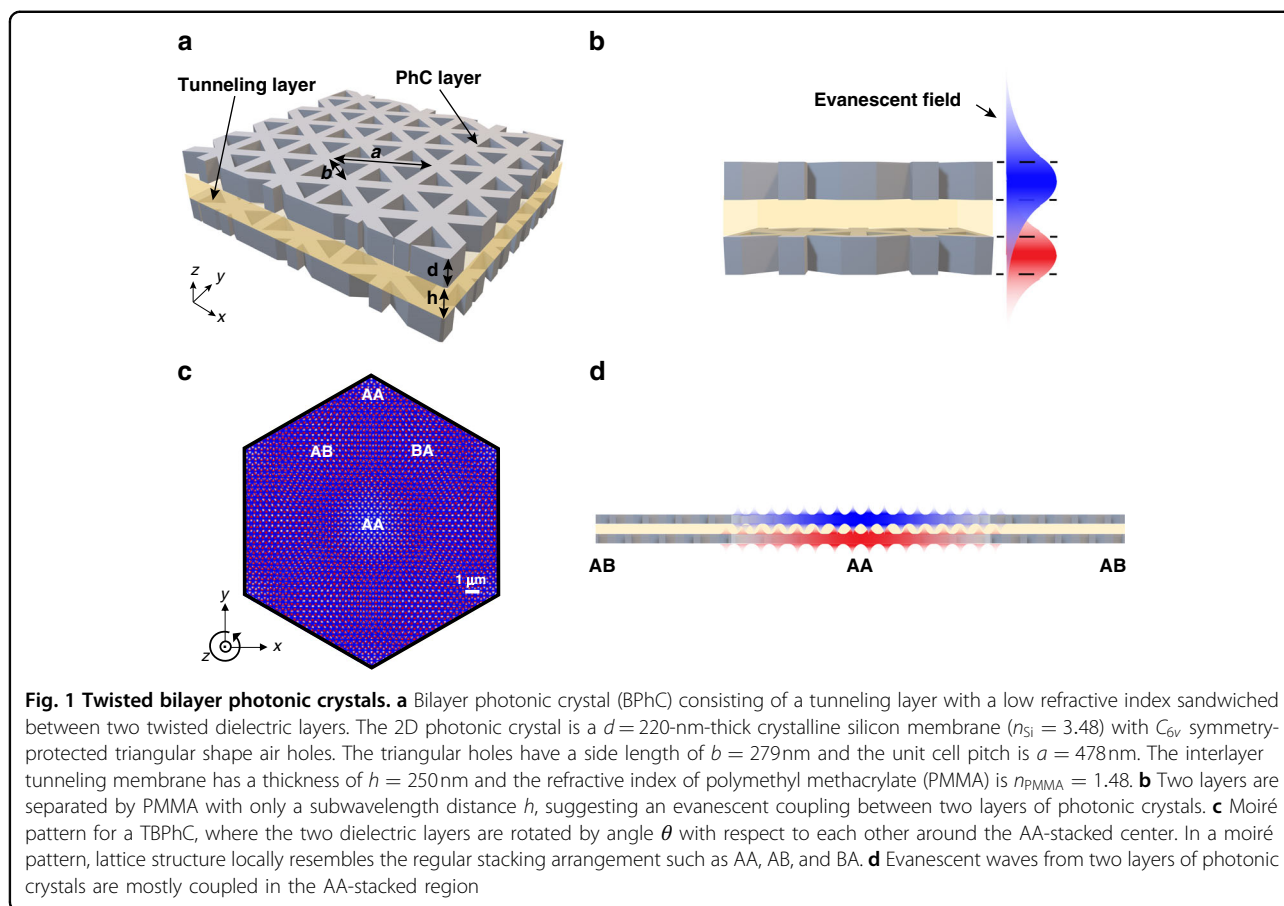
<sup>1</sup>School of Engineering and Applied Sciences, Harvard University, Cambridge, MA 02138, USA

<sup>2</sup>Brown Theoretical Physics Center and Department of Physics, Brown University, Providence, RI 02912, USA

© The Author(s) 2021



**Open Access** This article is licensed under a Creative Commons Attribution 4.0 International License, which permits use, sharing, adaptation, distribution and reproduction in any medium or format, as long as you give appropriate credit to the original author(s) and the source, provide a link to the Creative Commons license, and indicate if changes were made. The images or other third party material in this article are included in the article's Creative Commons license, unless indicated otherwise in a credit line to the material. If material is not included in the article's Creative Commons license and your intended use is not permitted by statutory regulation or exceeds the permitted use, you will need to obtain permission directly from the copyright holder. To view a copy of this license, visit <http://creativecommons.org/licenses/by/4.0/>.



structure in TBG-like systems has not been reported. Here, we correct that deficit.

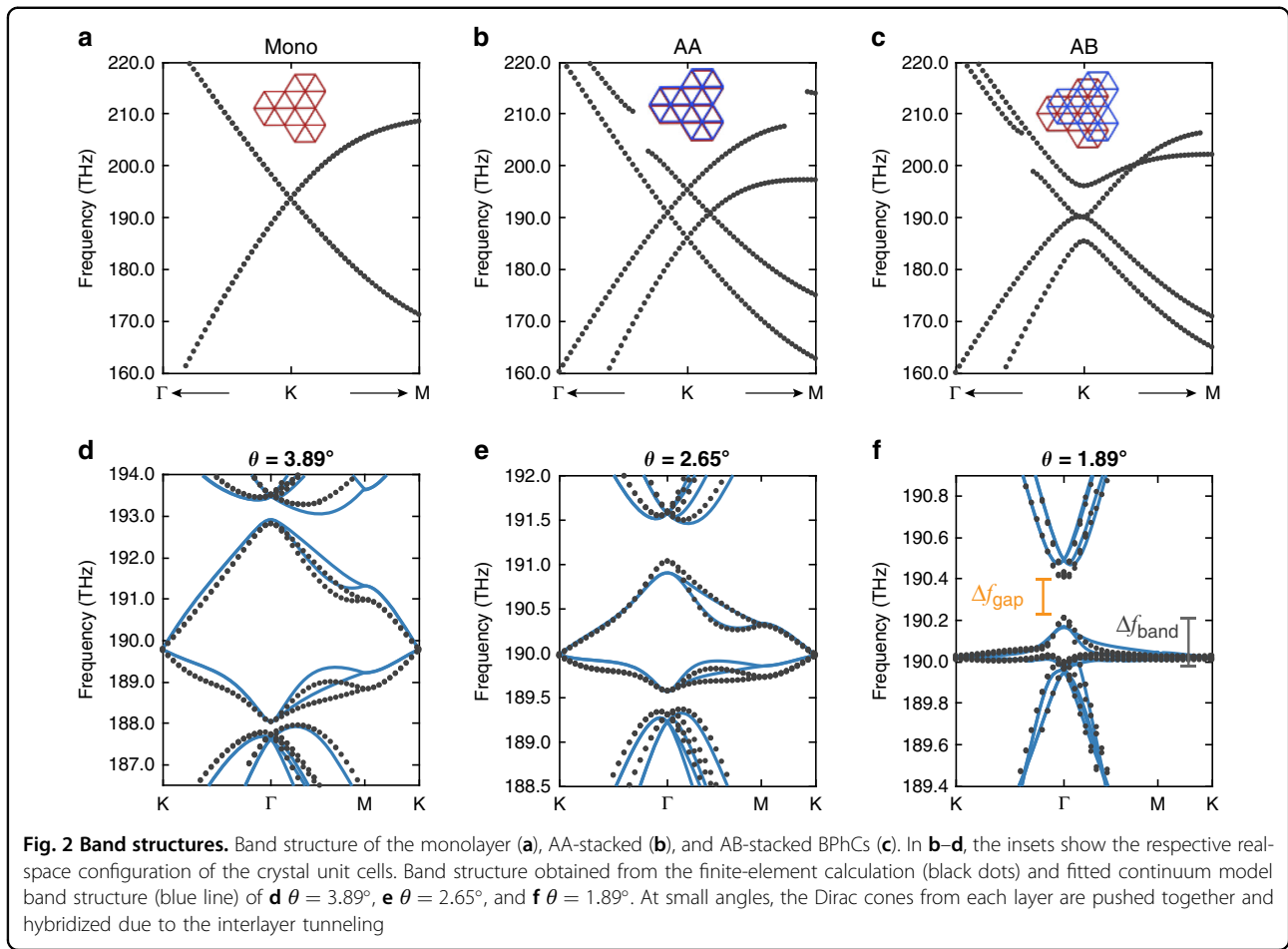
In this paper, we report on the modeling of twisted bilayer photonic crystals (TBPhCs) consisting entirely of dielectric materials. We find that TBPhCs have a photonic band structure that is similar to the electronic band structure of TBG. At a twist angle of  $1.89^\circ$ , the resulting moiré flat bands have group velocities ( $v_g$ ) that vanish at the K point leading to an extreme slow-light effect. In analogy to the confinement of electronic wavefunctions in magic-angle TBG, we observe low-loss light localization in this linear periodic photonic system. Unlike Anderson localization in optical quasicrystals, the localization we observe does not require disorder<sup>12,37</sup>. As many photonic crystal and crystal analogy, TBPhCs and TBGs are that photonic states are not as tightly bound as their electronic counterparts and that the photonic system has a larger band asymmetry. The tunneling layer between the PhC slabs and the geometry of the slabs provide additional degrees of freedom for engineering the photonic band structure.

A major advantage of TBPhCs over conventional slow-light media is that TBPhCs display slow-light behavior over an extremely narrow bandwidth. We can therefore design versatile TBPhCs that operate across a broad range of visible

and infrared frequencies, which can be used to realize slow-light and flat-band applications. These TBPhCs open the door to studying strong light-matter interactions, such as nanoscale-based enhancement of nonlinear effects, where a combination of light localization, low loss, and slow light is required<sup>38–41</sup>. In addition, they can be used to investigate flat-band phenomena and wave-packet localization in 2D systems at the nanoscale. Finally, the flexibility in designing TBPhCs permits simulating and exploring the band structure behavior of their electronic counterparts.

## Results

Here we introduce a dielectric photonic crystal platform that hosts a band structure analogous to TBG. We start with a monolayer 2D honeycomb photonic crystal inspired by graphene<sup>28</sup>. The 2D photonic crystal is a silicon membrane with  $C_{6v}$  symmetry-protected triangular shape air holes (Fig. 1a). By placing two photonic crystal slabs close to each other, the guided resonances in the two slabs couple through an evanescent tunneling pathway (Fig. 1b). We use a finite-element method (COMSOL Multiphysics) to numerically calculate the band structure. In the monolayer band structure, the lowest singly degenerate quasi-transverse-electric (quasi-TE) band is well isolated from other higher-order



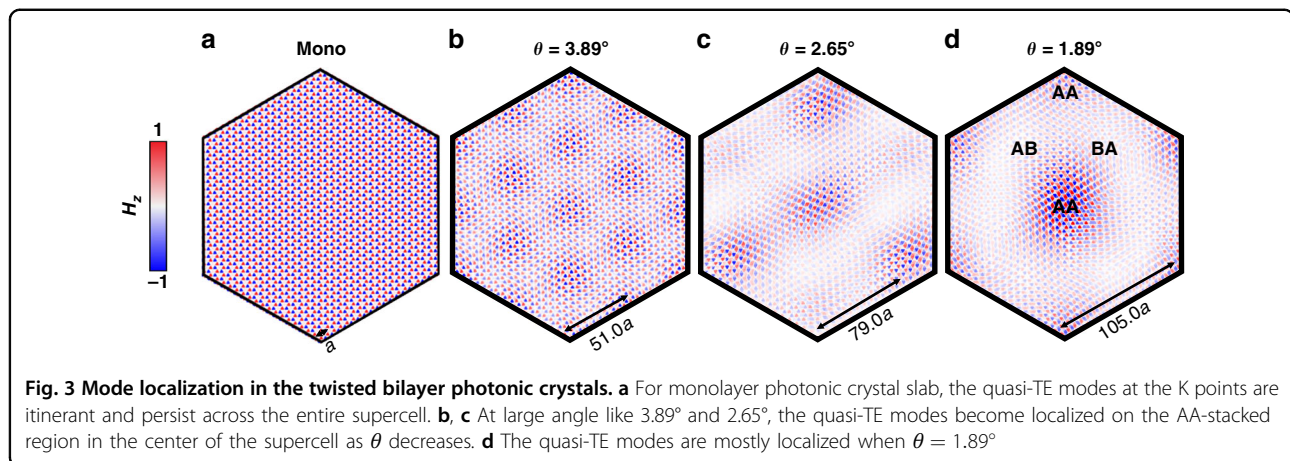
bands (see Fig. 2a). The  $C_{6v}$  symmetry of the lattice also protects a Dirac-like crossing at the K point centered at the Dirac cone frequency ( $f_{DC}$ ), which is equivalent to the Fermi level in graphene (see Fig. 2a). In this monolayer PhC, quasi-TE electromagnetic modes that primarily propagate through air holes are weakly coupled with neighboring holes, mimicking how electrons hop between carbon atoms in graphene. The nearest- and next-nearest-neighbor coupling strength of electromagnetic modes can be controlled independently by varying the monolayer geometry, providing a platform to implement a broad class of tight-binding models. Building off this monolayer band structure, two sheets of photonic crystals are then coupled by an interlayer tunneling membrane to accurately recreate the AB- and AA-stacked configurations of bilayer graphene. In the AA-stacked configuration, two layers of PhCs are exactly aligned, while in the AB-stacked configuration, the top layer honeycomb center lies over one of the bottom layer's triangular airhole centers. The band structure of the AA-stacked configuration looks like two copies of the monolayer bands with a vertical offset of the Dirac cones at the K point (see Fig. 2b). The AB-stacked configuration has a pair of touching parabolic bands with additional parabolic bands away from the

touching bands (see Fig. 2c). Note that the AB- and BA-stacked configurations give identical band structures but not identical eigenmodes. The frequency separation between the bands in both stacking configurations is controlled by the tunneling strength between the two PhC layers, which is set by the properties of both tunneling membranes and the PhC layers.

Next, we consider two adjacent PhC layers twisted by an angle  $\theta$  relative to one another. This produces a moiré pattern with a macroscopic periodicity of distinct AA and AB/BA stacking regions that grow in size as the angle decreases (Fig. 1c). Because our finite-element calculation relies on the existence of Bloch waves (see Fig. S1), we ensure that the structures created by twisting two lattices relative to each other are exactly periodic, or commensurate, by considering only specific twist angles<sup>42</sup>,

$$\theta = 2 \arcsin \arcsin \left( \frac{1}{2\sqrt{3n^2 + 3n + 1}} \right) \quad \forall n \in \mathbb{Z}^+ \quad (1)$$

The twist angle  $\theta$  controls the energy scale ( $E = hf$ ) at which the Dirac cones of the two PhC layers intersect in



momentum space. When this energy scale is comparable to the interlayer tunneling strength, band hybridization induces moiré flat bands (see Fig. S2). The moiré flat bands are fully compressed around the Dirac cone frequency  $f_{DC}$  and degenerate at the superlattice K point (see Fig. 2d–f). Our TBPhCs therefore reproduce a similar band-flattening mechanism as TBG, eventually becoming flat with a zero K point group velocity ( $v_g(K) = 0$ ) at a “magic angle” of 1.89°.

Quasi-TE modes in the moiré bands have symmetry properties and spatial profiles that agree with electronic wavefunctions in magic-angle TBG<sup>43</sup>. For the monolayer PhC slab, the quasi-TE modes are located across the entire supercell (Fig. 3a). When two layers of PhC are twisted, evanescent modes are coupled more strongly in the AA site than in the AB site (Fig. 1d). For large angles, the moiré quasi-TE modes start to localize around the AA site (Fig. 3b, c). At the magic angle  $\theta = 1.89^\circ$ , as  $v_g(K)$  vanishes, the quasi-TE modes become mostly localized around the AA site (Fig. 3d). This type of localization is observed over most of the Brillouin zone except at the  $\Gamma$  point, where the AA site has zero-mode intensity due to the symmetry (see Fig. S3)<sup>43</sup>. The moiré modes, including non-flattened moiré modes, are all low-loss modes with quality factors ( $Q$ -factors) varying from  $2 \times 10^5$  to  $1 \times 10^7$ . While large, these  $Q$ -factors are finite in contrast to the infinite  $Q$ -factors of the monolayer and AA/AB-stacked photonic crystals modes (see Fig. S4). The localization and high  $Q$ -factor properties of the moiré modes are important in the realization of device-based enhancement of nonlinear effects.

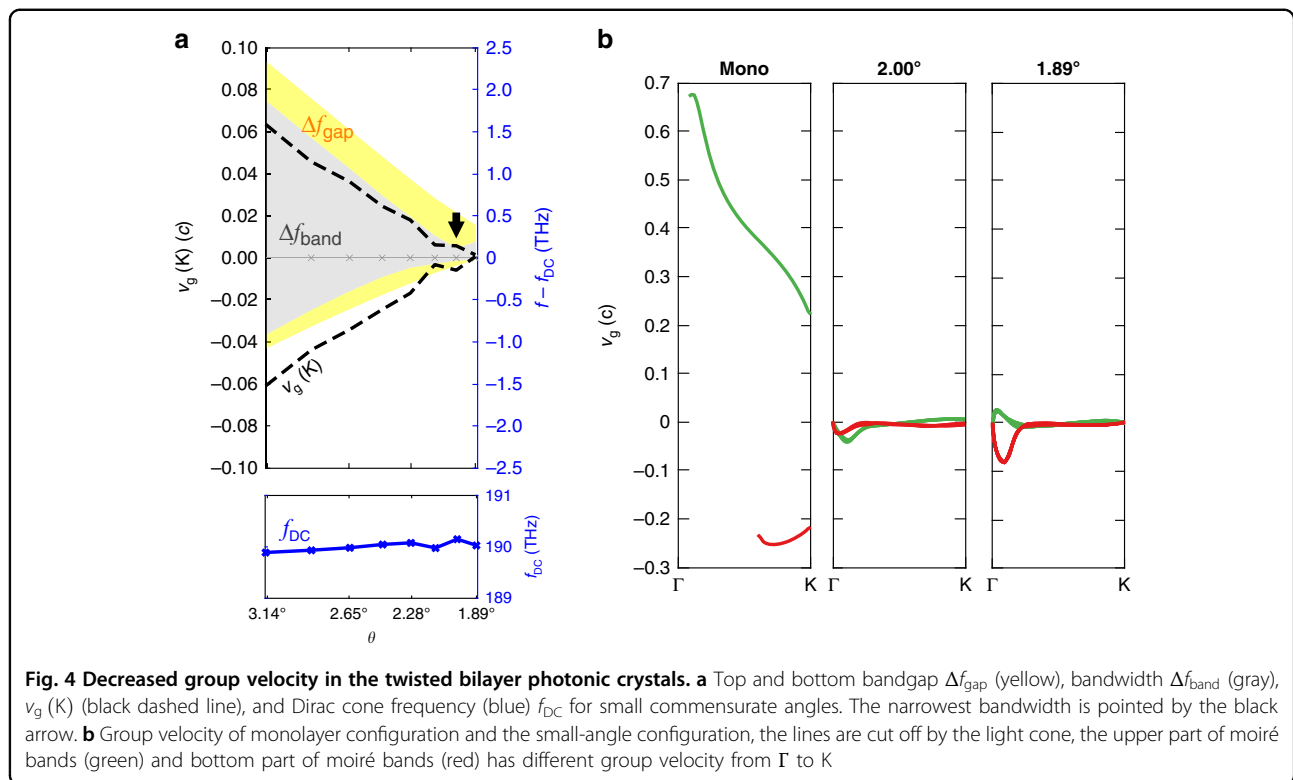
Compared to TBG’s electronic band structure, the Dirac cone frequency  $f_{DC}$  of the TBPhCs depends more strongly on twist angle and moves 0.2 THz between 3.48° and 1.89° (0.51% of its’ first nearest-neighbor coupling amplitude, which in TBG would correspond to a roughly 15 meV variation in Dirac cone energy). Moreover, compared to graphene, the band structure of

TBPhCs has a greater asymmetry in both the moiré bandgaps ( $\Delta f_{gap}$ ) and K point group velocities ( $v_g(K)$ ) (see Fig. 2f). The bandgap above the flat band is twice as larger as that below the flat band (see Fig. 4a). We also find that at angles  $>3^\circ$ , the bottom bands show a much slower dispersion than the top bands.

To investigate the origin of these differences, we also calculated the band structure using a plane-wave continuum model and by considering a low-energy expansion of the TBG’s band structure. The effective Hamiltonian consists of Dirac Hamiltonians from both layers, sampled on momenta that are scattered by the moiré reciprocal lattice, and off-diagonal interlayer tunneling terms<sup>5</sup>. We begin with the block diagonal part, which is the Dirac Hamiltonians of each monolayer given in terms of the relative momentum  $q$  away from that layer’s K point ( $O(q^2)$ ):

$$H_{gr}(K + q) \approx \frac{-a(t_1 - 2t_3)\sqrt{3}}{2} \sigma \times q - \frac{3a^2 t_2}{4} q^2 - 3t_2 \quad (2)$$

where  $\sigma$  is the  $2 \times 2$  Pauli matrices,  $a$  is the lattice constant, and the  $t_i$  is the  $i$ th nearest-neighbor couplings in a tight-binding picture for graphene. Note that although we use tight-binding coefficients to parameterize our model here, it is still a Bloch wave expansion of photonic crystal states. Some of the unconventional behavior can already be explained by this monolayer Hamiltonian. Due to relatively strong tunneling between the photonic states of the two layers, if the effective second nearest-neighbor coupling term ( $t_2$ ) changes by a fraction of a THz as a function of twist angle, then the Dirac cone frequency  $f_{DC}$  will also vary with twist angle because of the last term in Eq. 2. A large  $t_2$  also explains the difference between the top and bottom  $v_g(K)$  at large angles, due to the frequency-asymmetric  $q^2$  term.



We now move to the block off-diagonal terms in the effective Hamiltonian. The interlayer tunneling in TBG between pairs of orbital types of different layers (say, AA or AB) varies smoothly with the periodicity of the moiré superlattice (see Fig. 1d). This justifies their parameterization by just the first-order Fourier coefficients, commonly labeled  $\omega_0$  for tunneling between orbitals of the same type (AA and BB) and  $\omega_1$  for orbitals of differing types (AB and BA)<sup>1</sup>. To open up significant superlattice gaps,  $\omega_0$  must be smaller than  $\omega_1$ , with  $\omega_0 = 0$  maximizing the superlattice gap, while  $\omega_1$  defines the effective tunneling strength for the magic-angle condition<sup>44</sup>. This simple model produces similar bandgaps above and below the Fermi energy. DFT calculations of lithium-intercalated TBG, however, show a large disparity in the top and bottom gaps<sup>45</sup>. This asymmetry was attributed to the Li atoms preferentially enhancing or screening the tunneling between the layers at different energies, affecting the effective interlayer tunneling strength for the top and bottom bands differently. As the photonic crystal states are not as tightly bound as the  $p_z$  orbitals in graphene (see our estimations of the monolayer's  $t_i$  values below), having an asymmetry in the effective interlayer tunneling at high and low frequency is even less surprising here. Therefore, we fit our continuum model to the TBPhC band structures obtained by finite-element modeling by tuning variables in the following manner: for the monolayer model, we pick fixed values of  $t_1$ ,  $t_2$ , and  $t_3$  across all twist angles, but shift the Dirac cone frequency to a constant

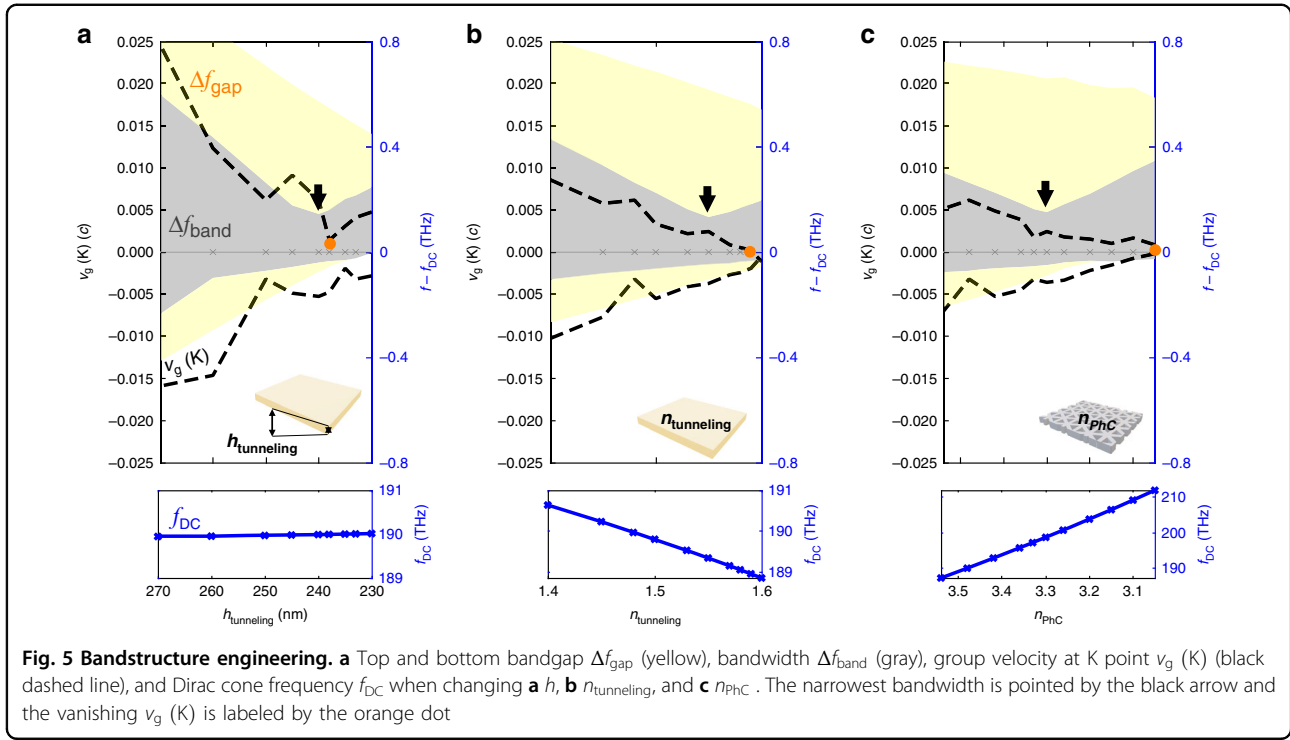
value; for the interlayer tunneling, we pick  $\omega_0$  and  $\omega_1$  independently for the top and bottom bands, giving four variables:  $\omega_0^t$ ,  $\omega_1^t$ ,  $\omega_0^b$ ,  $\omega_1^b$ . In addition, near the magic angle, these terms should become similar, so we allow them to generically depend on  $\theta$ .

We find that  $[t_1, t_2, t_3] = [-39, 17, -5]$  THz works well for all twist angles. For the low-energy Hamiltonian,  $v_g$  (K) depends on  $t_1 - 2t_3$ ; the asymmetry in  $v_g$  (K) sets the strength of  $t_2$ , so we increase  $t_1$  and  $t_3$  together to give a sequence of couplings that show reasonable decay in strength. In contrast, for TBG the coupling strengths given by DFT simulations decay by roughly a factor of 10 between  $t_1$  and  $t_2$ <sup>46</sup>, indicating that these electronic states are much more tightly bound than their photonic counterparts.

At the magic angle ( $\theta = 1.89^\circ$ ) we find good agreement when selecting  $\omega_0^t = 1.43$  and  $\omega_1^t = 1.85$  THz for the top-side tunneling (above Dirac frequency) and  $\omega_0^b = \omega_1^b = 1.85$  THz for the bottom-side tunneling (below Dirac frequency). We obtain a good fit to the bands using a linear dependence of the tunneling strengths on the twist angle

$$\begin{aligned} \omega_i^t(\theta) &= [1 - 0.15(\theta - \theta_m)]\omega_i^t(\theta_m)\omega_i^b(\theta) \\ &= [1 + 0.15(\theta - \theta_m)]\omega_i^b(\theta_m) \end{aligned} \quad (3)$$

for  $\theta$  evaluated in degrees. At  $\theta = 4^\circ$ , the tunneling coefficients are roughly 30% weaker for the top side and 30% stronger for the bottom side. The enhancement of



the bottom-side tunneling is counterbalanced by a suppression of the top-side tunneling, implying that the “net” tunneling is unchanged, while its distribution between the relevant orbitals is modified, in agreement with the study of Li-intercalated TBG. This unusual interlayer tunneling behavior results in the severe top band and bottom band asymmetry we observe in the TBPhC’s band structure.

Our model gives a very reliable reproduction of the bands close to the Dirac cone frequency, with only small disagreements occurring in the top and bottom parts of the flat bands at the magic angle (see Fig. 2d–f). This is due to terms not captured by our simple model. Specifically, we omit the momentum dependence of the interlayer tunneling terms<sup>47,48</sup> that provide a more accurate description of their Fourier transform.

The photonic moiré flat bands exhibit slow-light effects both at the magic angle  $\theta = 189^\circ$  and at  $\theta = 2^\circ$ . Figure 4b shows the group velocity ( $v_g = d\omega/dk$ ) is drastically reduced in the  $\Gamma$  to K direction. While  $v_g = 0.2c$ – $0.68c$  in a monolayer PhC, in the TBPhCs at  $\theta = 2^\circ$   $v_g$  is reduced to  $0.005c$  near the K point and never exceeds  $0.04c$  over the entire Brillouin zone. At the magic angle  $\theta = 189^\circ$ ,  $v_g$  is reduced to zero at the K point and never exceeds  $0.08c$ . Note that although the magic angle is at  $\theta = 189^\circ$ , because of the higher  $v_g$  around  $\Gamma$  point at  $1.89^\circ$ , the narrowest moiré bandwidth,  $\Delta f_{\text{band}} = 0.217$  THz, is obtained at  $\theta = 2^\circ$  (see Fig. 3a). The small  $v_g$  over the entire Brillouin zone is

essential for all-directional photonic devices and any device-based enhancement of nonlinear effects.

We also studied the dependence of the TBPhC band structure on the geometry parameters. We fix  $\theta = 2.13^\circ$  and individually vary the tunneling layer thickness ( $h$ ), the refractive index of the tunneling layer ( $n_{\text{tunneling}}$ ), and the refractive index of the PhC bilayer ( $n_{\text{PhC}}$ ). Varying  $h$ , we find that  $f_{\text{DC}}$  remains unchanged and obtain a minimum in  $v_g$  (K) at  $h = 250$  nm and the narrowest bandwidth  $\Delta f_{\text{band}} = 0.185$  THz at  $h = 240$  nm (see Fig. 5a). Increasing  $n_{\text{tunneling}}$  decreases  $f_{\text{DC}}$ , and  $v_g$  (K) is reduced to zero when  $n_{\text{tunneling}} = 1.59$ , while the narrowest bandwidth  $\Delta f_{\text{band}} = 0.18$  THz is obtained at  $n_{\text{tunneling}} = 1.55$  (see Fig. 5b). Decreasing  $n_{\text{PhC}}$  increases  $f_{\text{DC}}$ , and  $v_g$  (K) is reduced to zero when  $n_{\text{Si}} = 3.05$ , while the narrowest bandwidth  $\Delta f_{\text{band}} = 0.2$  THz is obtained at  $n_{\text{PhC}} = 3.3$  (see Fig. 5c). In all three cases, the Dirac cone frequency  $f_{\text{DC}}$  is modified due to the change in the effective refractive index of the TBPhC. To study how the interlayer tunneling depends on the three geometry parameters, we again fitted the continuum model to the band structures obtained from finite-element modeling (see Fig. S5). Starting from the original values of  $h = 250$  nm,  $n_{\text{tunneling}} = 1.48$ , and  $n_{\text{PhC}} = 3.48$ , and we obtain the following dependence of the tunneling parameters  $\omega_0^t, \omega_1^t, \omega_0^b, \omega_1^b$  on the three geometry parameters:

$$\begin{aligned} \omega_1^b &= \omega_1^b(\theta_m) \\ \omega_i^j &= \beta \omega_i^j(\theta_m) \end{aligned} \quad (4)$$

with

$$\begin{aligned}\beta(h) &= 1 - \frac{h-250\text{nm}}{135\text{nm}} \\ \beta(n_{\text{PhC}}) &= 1 - 0.85(n_{\text{PhC}} - 3.48) \\ \beta(n_{\text{tunneling}}) &= 1 + (n_{\text{tunneling}} - 1.5)\end{aligned}\quad (5)$$

Changing the geometry parameters affects all tunneling parameters except the AA orbital tunneling represented by  $\omega_1^b$ . As  $h$  or  $n_{\text{tunneling}}$  increases or  $n_{\text{PhC}}$  decreases, the strength of the tunneling becomes smaller. It is possible that the change in these parameters modifies not only the  $\omega$  terms but also the in-plane couplings  $t_i$ , but near the magic angle, the band structure is predominantly defined by a ratio between these two types of model parameters<sup>1</sup>; therefore, we consider the  $t_i$  fixed for simplicity. The parameter independence of  $\omega_1^b$  is motivated by observations of the near parameter independence of the bottom bands, which is likely because the geometry parameters predominantly modify the higher frequency photonic modes (see Fig. S6). Understanding the dependence of the band structure on the geometry parameters provides additional degrees of freedom in further engineering the optical moiré flat band and indicates the possibility of having a magic angle at higher  $\theta$ , where localized modes are closer to each other in distance<sup>30</sup>.

## Discussion

Our numerical calculations show that the dispersion of electromagnetic waves can be manipulated dramatically, from highly dispersive to flat, by simply changing the angle between two photonic crystal slabs. We identified the magic angle where moiré flat bands appear, leading to a large reduction in group velocity compared to monolayer PhC. At this angle, TBPhCs exhibit slow-light behavior within an extremely narrow bandwidth and the eigenmodes are highly localized in the regions exhibiting AA stacking. We studied the photonic band structure behavior using a plane-wave continuum model and found that TBPhCs differ from TBG both in intralayer coupling and interlayer tunneling characteristics. We find that interlayer tunneling can be controlled by tuning the geometry parameters ( $h, n_{\text{tunneling}}, n_{\text{PhC}}$ ), facilitating the design of an optical flat band.

The “twisted photonic crystal toolkit” we present here provides access to slow-light effects and light localization that cannot be accomplished by conventional photonic crystals. Therefore, TBPhCs will drastically enhance access to optical nonlinearities and quantum interactions in photonic devices. Because TBPhCs are designed for standard silicon-on-substrate wafers and can be fabricated by a wafer bonding and transferring technique, the fabrication of such devices is immediately feasible.

## Materials and methods

### Simulation

The finite-element band structure, eigenmode, and Q-factor simulations were computed using three-dimensional finite-element methods (COMSOL Multiphysics 5.4). We first calculated all the modes in a PhC unit cell/super unit cell with Floquet periodic boundary conditions in the two lattice-vector directions and perfectly matched layers at the boundaries in the out-of-plane direction. TM/TE-polarized modes were selected by evaluating the energy ratio of the electric and magnetic fields in all directions. The simulations were carried out on a Dell M630 computer (2 × Intel Xeon CPU E5-2697 v4 2.30 GHz 18 core, 247 Gb RAM, 1 GbE, FDR Infiniband). The time to calculate the photonic band structure at the magic angle is roughly 24 h. The plane-wave continuum model is implemented using MATLAB. The estimated calculation time is a few seconds per band structure.

### Acknowledgements

We thank Jennifer E. Hoffman, Fanqi Yuan, Minhal Gardezi, Michaël Lobet, Harris Pirie, William Dorrell, S. Ben November, Shang Liu, Zhu Yuan, and Weilu Shen for discussions. The Harvard University team acknowledges support from DARPA under contract URFAO: GR510802. The finite-element simulations in this paper were run on the FASRC Cannon cluster supported by the FAS Division of Science Research Computing Group at Harvard University.

### Author contributions

H.T. and C.D. provided the initial idea for this work. H.T., F.D., and O.M. carried out the finite-element simulations. S.C. carried out the continuum model fitting and analysis. E.M. supervised the research and the development of the manuscript. H.T. wrote the manuscript with input from all authors. All authors subsequently took part in the revision process and approved the final copy of the manuscript.

### Conflict of interest

The authors declare no competing interests.

**Supplementary information** The online version contains supplementary material available at <https://doi.org/10.1038/s41377-021-00601-x>.

Received: 26 March 2021 Revised: 29 June 2021 Accepted: 13 July 2021  
Published online: 29 July 2021

## References

- Bistritzer, R. & MacDonald, A. H. Moiré bands in twisted double-layer graphene. *Proc. Natl Acad. Sci. USA* **108**, 12233–12237 (2011).
- Cao, Y. et al. Correlated insulator behaviour at half-filling in magic-angle graphene superlattices. *Nature* **556**, 80–84 (2018).
- Cao, Y. et al. Unconventional superconductivity in magic-angle graphene superlattices. *Nature* **556**, 43–50 (2018).
- Carr, S., Fang, S. A. & Kaxiras, E. Electronic-structure methods for twisted moiré layers. *Nat. Rev. Mater.* **5**, 748–763 (2020).
- Carr, S. et al. Twistrionics: Manipulating the electronic properties of two-dimensional layered structures through their twist angle. *Phys. Rev. B* **95**, 075420 (2017).
- Sunku, S. S. et al. Photonic crystals for nano-light in moiré graphene superlattices. *Science* **362**, 1153–1156 (2018).
- Hu, G. W. et al. Topological polaritons and photonic magic angles in twisted  $\alpha$ -MoO<sub>3</sub> bilayers. *Nature* **582**, 209–213 (2020).

8. Duan, J. H. et al. Twisted nano-optics: manipulating light at the nanoscale with twisted phonon polaritonic slabs. *Nano Lett.* **20**, 5323–5329 (2020).
9. Zheng, Z. B. et al. Phonon polaritons in twisted double-layers of hyperbolic van der Waals crystals. *Nano Lett.* **20**, 5301–5308 (2020).
10. Nguyen, D. X. et al. Magic configurations in Moiré superlattice of bilayer photonic crystal: almost-perfect flatbands and unconventional localization. Preprint at <https://arxiv.org/pdf/2104.12774.pdf> (2021).
11. Khurgin, J. B. Light slowing down in Moiré fiber gratings and its implications for nonlinear optics. *Phys. Rev. A* **62**, 013821 (2000).
12. Wang, P. et al. Localization and delocalization of light in photonic moiré lattices. *Nature* **577**, 42–46 (2020).
13. Lou, B. C. et al. Theory for twisted bilayer photonic crystal slabs. *Phys. Rev. Lett.* **126**, 136101 (2021).
14. Lu, J. Y. et al. Valley topological phases in bilayer sonic crystals. *Phys. Rev. Lett.* **120**, 116802 (2018).
15. Lu, L., Joannopoulos, J. D. & Soljačić, M. Topological photonics. *Nat. Photonics* **8**, 821–829 (2014).
16. Lu, L., Joannopoulos, J. D. & Soljačić, M. Topological states in photonic systems. *Nat. Phys.* **12**, 626–629 (2016).
17. Hafezi, M. et al. Imaging topological edge states in silicon photonics. *Nat. Photonics* **7**, 1001–1005 (2013).
18. Fang, K. J. & Wang, Y. K. Anomalous quantum hall effect of light in Bloch-wave modulated photonic crystals. *Phys. Rev. Lett.* **122**, 233904 (2019).
19. Hafezi, M., Lukin, M. D. & Taylor, J. M. Non-equilibrium fractional quantum Hall state of light. *N. J. Phys.* **15**, 063001 (2013).
20. Xie, B. Y. et al. Higher-order quantum spin Hall effect in a photonic crystal. *Nat. Commun.* **11**, 3768 (2020).
21. Bliokh, K. Y., Smirnova, D. & Nori, F. Quantum spin Hall effect of light. *Science* **348**, 1448–1451 (2015).
22. Jin, J. C. et al. Topologically enabled ultrahigh-Q guided resonances robust to out-of-plane scattering. *Nature* **574**, 501–504 (2019).
23. Ochiai, T. Broken symmetry and topology in photonic analog of graphene. *Int. J. Mod. Phys. B* **28**, 1441004 (2014).
24. Ochiai, T. & Onoda, M. Photonic analog of graphene model and its extension: Dirac cone, symmetry, and edge states. *Phys. Rev. B* **80**, 155103 (2009).
25. Wu, L. H. & Hu, X. Scheme for achieving a topological photonic crystal by using dielectric material. *Phys. Rev. Lett.* **114**, 223901 (2015).
26. Parappurath, N. et al. Direct observation of topological edge states in silicon photonic crystals: spin, dispersion, and chiral routing. *Sci. Adv.* **6**, eaaw4137 (2020).
27. Song, D. H. et al. Unveiling pseudospin and angular momentum in photonic graphene. *Nat. Commun.* **6**, 6272 (2015).
28. Barik, S. et al. Two-dimensionally confined topological edge states in photonic crystals. *N. J. Phys.* **18**, 113013 (2016).
29. Ozawa, T. et al. Topological photonics. *Rev. Mod. Phys.* **91**, 015006 (2019).
30. Gardezi, S. M. et al. Acoustic twisted bilayer graphene. Preprint at <https://arxiv.org/abs/2010.10037> (2020).
31. Oudich, M. et al. Bilayer photonic graphene. Preprint at <https://arxiv.org/physics/2103.03686> (2021).
32. Wu, Z. L. & Zheng, Y. B. Moiré metamaterials and metasurfaces. *Adv. Opt. Mater.* **6**, 1701057 (2018).
33. Wu, Z. & Zheng, Y. Moiré chiral metamaterials. *Adv. Opt. Mater.* **5**, 1700034 (2017).
34. Chen, K. et al. Moiré nanosphere lithography. *ACS Nano* **9**, 6031–6040 (2015).
35. Jin, C. et al. Preferential alignment of incommensurate block copolymer dot arrays forming Moiré superstructures. *ACS Nano* **11**, 3237–3246 (2017).
36. Wang, Y. et al. Observation of magic angle and wall state in twisted bilayer photonic graphene. Preprint at <https://arxiv.org/cond-mat/1911.09174> (2019).
37. Segev, M., Silberberg, Y. & Christodoulides, D. N. Anderson localization of light. *Nat. Photonics* **7**, 197–204 (2013).
38. Li, J. et al. Systematic design of flat band slow light in photonic crystal waveguides. *Opt. Express* **16**, 6227–6232 (2008).
39. Tang, L. Q. et al. Photonic flat-band lattices and unconventional light localization. *Nanophotonics* **9**, 1161–1176 (2020).
40. Leykam, D. & Flach, S. Perspective: photonic flatbands. *APL Photonics* **3**, 070901 (2018).
41. Baba, T. Slow light in photonic crystals. *Nat. Photonics* **2**, 465–473 (2008).
42. Shallcross, S. et al. Electronic structure of turbostratic graphene. *Phys. Rev. B* **81**, 165105 (2010).
43. Koshino, M. et al. Maximally localized Wannier orbitals and the extended Hubbard model for twisted bilayer graphene. *Phys. Rev. X* **8**, 031087 (2018).
44. Tamopolsky, G., Kruchkov, A. J. & Vishwanath, A. Origin of magic angles in twisted bilayer graphene. *Phys. Rev. Lett.* **122**, 106405 (2019).
45. Larson, D. T. et al. Effects of lithium intercalation in twisted bilayer graphene. *Phys. Rev. B* **101**, 075407 (2020).
46. Fang, S. A. & Kaxiras, E. Electronic structure theory of weakly interacting bilayers. *Phys. Rev. B* **93**, 235153 (2016).
47. Guinea, F. & Walet, N. R. Continuum models for twisted bilayer graphene: Effect of lattice deformation and hopping parameters. *Phys. Rev. B* **99**, 205134 (2019).
48. Carr, S. et al. Exact continuum model for low-energy electronic states of twisted bilayer graphene. *Phys. Rev. Res.* **1**, 013001 (2019).