



PHOTONICS Research

Systematic investigation of millimeter-wave optic modulation performance in thin-film lithium niobate

YIWEN ZHANG,¹  LINBO SHAO,^{2,3}  JINGWEI YANG,¹ ZHAOXI CHEN,¹  KE ZHANG,¹
KAM-MAN SHUM,⁴ DI ZHU,^{2,5,6}  CHI HOU CHAN,^{1,4} MARKO LONČAR,² AND CHENG WANG^{1,4,*} 

¹Department of Electrical Engineering, City University of Hong Kong, Kowloon, Hong Kong, China

²John A. Paulson School of Engineering and Applied Sciences, Harvard University, Cambridge, Massachusetts 02138, USA

³Bradley Department of Electrical and Computer Engineering, Virginia Tech, Blacksburg, Virginia 24061, USA

⁴State Key Laboratory of Terahertz and Millimeter Waves, City University of Hong Kong, Kowloon, Hong Kong, China

⁵Institute of Materials Research and Engineering, Agency for Science, Technology and Research (A*STAR), Singapore 138634, Singapore

⁶e-mail: zhu_di@imre.a-star.edu.sg

*Corresponding author: cwang257@cityu.edu.hk

Received 21 June 2022; revised 27 July 2022; accepted 21 August 2022; posted 23 August 2022 (Doc. ID 468518); published 28 September 2022

Millimeter-wave (mmWave) band (30–300 GHz) is an emerging spectrum range for wireless communication, short-range radar, and sensor applications. mmWave-optic modulators that could efficiently convert mmWave signals into the optical domain are crucial components for long-haul transmission of mmWave signals through optical networks. At these ultrahigh frequencies, however, the modulation performances are highly sensitive to the transmission line loss as well as the velocity- and impedance-matching conditions, while precise measurements and modeling of these parameters are often non-trivial. Here we present a systematic investigation of the mmWave-optic modulation performances of thin-film lithium niobate modulators through theoretical modeling, electrical verifications, and electro-optic measurements at frequencies up to 325 GHz. Based on our experimentally verified model, we demonstrate thin-film lithium niobate mmWave-optic modulators with a measured 3-dB electro-optic bandwidth of 170 GHz and a 6-dB bandwidth of 295 GHz. The device also shows a low RF half-wave voltage of 7.3 V measured at an ultrahigh modulation frequency of 250 GHz. This work provides a comprehensive guideline for the design and characterization of mmWave-optic modulators and paves the way toward future integrated mmWave photonic systems for beyond-5G communication and radar applications. © 2022 Chinese Laser Press

<https://doi.org/10.1364/PRJ.468518>

1. INTRODUCTION

Recent years have witnessed a rapid growth of global wireless network traffic. To keep up with the demand of the ever-increasing data capacity, it is an attractive and natural solution to explore new spectral bands that are less congested than currently used microwave bands. The millimeter-wave (mmWave) band (i.e., 30–300 GHz) is particularly interesting since it has higher frequencies than microwave bands and therefore allows for much larger channel bandwidths according to Shannon's theorem. mmWaves are also important for short-range radar and sensing applications [1]. However, the transmission and processing of mmWave signals are challenging and costly due to exacerbating metallic losses as well as the gain-bandwidth trade-off of traditional electronic components at high frequencies. mmWave photonics is a promising solution for addressing these issues in a cost-effective manner, since

it allows the generation, transmission, and processing of mmWave signals in the low-loss optical domain, in relation to the concept of microwave photonics [2].

For almost all mmWave-photonic systems, a key component is an electro-optic modulator that could efficiently convert mmWave signals into the optical domain [3,4]. However, it is a highly non-trivial task for electro-optic modulators to operate at high mmWave frequencies, in particular the range between 100 and 300 GHz. The electro-optic bandwidths of Si and InP modulators could barely reach this range, limited mainly by the carrier lifetimes in Si and the series resistance/microwave loss of the doped regions in InP [5,6]. Other emerging material platforms like electro-optic polymer or graphene have shown modulation bandwidths into the terahertz regime [7,8], yet proving their long-term stability and scalability remain. Lithium niobate (LN, LiNbO₃) is a promising candidate for mmWave-optic modulation purposes, since the Pockels-based

electro-optic effect in LN intrinsically happens on femtosecond timescales, and the material itself has been industry proven for decades [9]. However, the bandwidths of traditional off-the-shelf LN modulators are typically limited to <35 GHz, since the weak electro-optic interactions in ion-diffused waveguides lead to the requirement of long modulation electrodes and large RF losses, especially at high frequencies.

Benefiting from the development of ion-slicing and nano-fabrication technologies, the thin-film LN (TFLN) platform has recently shown great promise for pushing the operation bandwidths of LN modulators into the mmWave regime while exhibiting smaller device footprints and lower power consumption [9]. Owing to the much larger refractive index contrast and better confined optical mode in TFLN, the modulation electrodes could be placed much closer to the optical waveguide, leading to substantially increased electro-optic overlap and to required shorter modulation electrodes. As a result, a number of high-performance TFLN modulators have been developed, demonstrating low half-wave voltages (V_π) [10,11], high modulation bandwidths around 100 GHz [12–17], as well as ultra-high linearity [18]. The high-performance TFLN modulators could potentially be further integrated with frequency comb sources [19,20], tunable filters [21,22], and low-loss delay lines [23] on the same platform for future microwave- and mmWave-photonic applications. While many of these demonstrated modulators have theoretically predicted modulation capabilities much beyond 100 GHz [14–16], the experimental demonstrations are limited. In particular, it remains unclear whether the performances would match theoretical predictions due to the lack of electrical and electro-optic measurements at ultrahigh frequencies. In this range, the electro-optic efficiency is very sensitive to the velocity-matching condition and RF losses, and any deviation from the theoretical models can negatively impact the modulator performance. For example, Mercante *et al.* have measured the electro-optic responses of TFLN modulators at frequencies up to 500 GHz showing good potential, but the measured electro-optic response substantially differs from the theoretically predicted curve since electrical measurements (and in turn, model verifications) are limited to 110 GHz [15]. The measured 3-dB electro-optic bandwidth of the device is also limited to ~ 40 GHz. In terms of future mmWave-photonic applications, the lack of a comprehensive design guideline with electrical and electro-optic measurements-based verifications has become a major hurdle for TFLN modulators.

This work provides a systematic investigation of the velocity- and impedance-matching conditions and RF losses of TFLN modulators based on electrical and electro-optic measurements at frequencies up to 325 GHz. Our results show excellent agreement not only between the simulated and measured electrical parameters (i.e., RF index, impedance, and loss) but also between the electro-optic responses predicted from the measured electrical parameters and the actually measured electro-optic responses. Based on the proposed design guidelines, we experimentally demonstrate a 5.8-mm-long Mach–Zehnder modulator on TFLN with 3-dB and 6-dB electro-optic bandwidths of 175 GHz and 295 GHz, respectively (with reference to 1 GHz). The measured RF V_π is

as low as 7.3 V at an ultrahigh frequency of 250 GHz nearly at the upper bound of the mmWave spectrum, showing practical relevance for the majority of mmWave photonics applications.

2. mmWAVE-OPTIC MODULATOR DESIGN METHODOLOGY

Figure 1(a) illustrates an envisioned future mmWave-photonic system, where mmWave signals received at an antenna could be efficiently converted into optical signals via a modulator, filtered and processed using optical techniques, and/or transmitted over long distances through optical fiber links. An electro-optic modulator with a broad bandwidth covering the entire mmWave range is vital in such a system. Importantly, the peripheral components, including antennas [3], lasers [24], optical filters [21,22], amplifiers [24,25], and delay lines [23], have all been demonstrated on the LN platform and could potentially allow the integration of this entire system on the same chip.

Figures 1(b) and 1(c) depict the general structure of our mmWave-optic modulator, which follows the same design as most broadband TFLN modulators demonstrated to date [26]. The modulator consists of a ground-signal-ground (GSG) copper transmission line and an optical Mach–Zehnder interferometer (MZI). The modulator is based on an x -cut TFLN

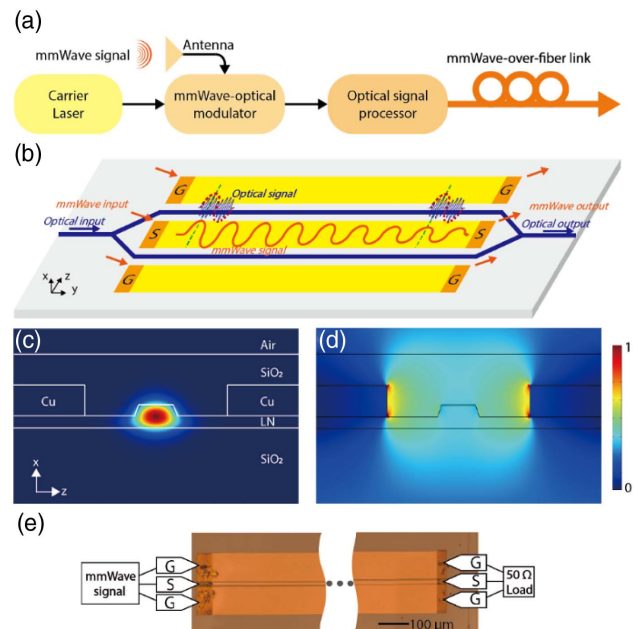


Fig. 1. (a) The schematic illustration of a future mmWave-photonic system, at the heart of which sits the mmWave-optic modulator that converts mmWave signals into the optical domain. (b) The schematic of the TFLN mmWave-optic modulator, where velocity matching between the optical and mmWave signals, impedance matching, and RF loss conditions determine the ultimately achievable modulation bandwidths. (c) The simulated optical mode profile (E_z) in the TFLN rib waveguide. (d) The simulated mmWave profile (E_z) at a frequency of 300 GHz. (e) The optical micrograph of a fabricated device (the darker regions at the two ends are exposed areas for electrical contacts, whereas other parts of the chip are cladded with silicon dioxide).

on top of a thermal oxide on a Si substrate, such that a combination of transverse-electric (TE) optical modes and in-plane electrodes allows the exploitation of the largest electro-optic tensor component r_{33} of LN.

There are two main performance metrics for a mmWave-optic modulator, which we focus on optimizing in the rest of this paper: 1) the electro-optic S_{21} (EO S_{21}) parameter, which depicts the relative modulation efficiency roll-off with reference to the DC or low-frequency (1 GHz in this work) electro-optic response, and 2) the RF V_π , which indicates the absolute modulation efficiency at a certain frequency. The 3-dB and 6-dB bandwidths of a modulator refer to the frequencies at which EO S_{21} drops by the respective dB numbers. At 3-dB and 6-dB points, the RF V_π values are 1.414 \times and 2 \times the low-frequency V_π , respectively, since the input electrical power scales quadratically with modulation voltage. Therefore, both 3-dB and 6-dB bandwidths are relevant metrics for practical applications.

The modulation performance at high RF frequencies is mainly limited by three factors [Fig. 1(b)]. First, the phase velocity of the mmWave should be matched with the optical group velocity such that the same electrical signal could be continuously applied to the propagating optical pulse resulting in an efficient modulation. Second, the mmWave loss should be kept minimal such that the modulation signal could remain significant throughout the modulator. Third, the impedance of the transmission line should be matched with that of external electronics (typically 50 Ω) to avoid power reflection at the input port. Quantitatively, the effective modulation voltage (normalized to input voltage) averaged along the transmission line can be expressed as

$$m(\omega) = \left| \frac{2Z_{\text{in}}}{Z_{\text{in}} + Z_C} \right| \left| \frac{(Z_C + Z_0)F_+ + (Z_C - Z_0)F_-}{(Z_C + Z_0)e^{i\gamma_m L} + (Z_C - Z_0)e^{-i\gamma_m L}} \right|, \quad (1)$$

where ω is the mmWave frequency, $Z_{\text{in}} = Z_0 \frac{Z_C + Z_0 \tanh(\gamma_m L)}{Z_0 + Z_C \tanh(\gamma_m L)}$ is the transmission line input impedance, Z_0 is the characteristic impedance of the transmission line, Z_C is the impedance of the source and termination (usually 50 Ω), $F_\pm = (1 - e^{\pm i\gamma_m L - j\frac{\omega}{c}n_o L}) / (\pm i\gamma_m L - j\frac{\omega}{c}n_o L)$ corresponds to the forward/backward propagating waves, $\gamma_m = \alpha_m + j\frac{\omega}{c}n_m$ is the microwave propagation constant (n_m is the mmWave effective index, α_m is the loss coefficient), n_o is the optical group refractive index, L is the modulation length, and c is the speed of light in the vacuum.

The relative modulation efficiency, EO S_{21} , is simply $|m(\omega)|^2$ in dB scale since it relates to the power roll-off, which could be written as

$$\text{EO } S_{21} = 10 \log \left[(1 - H)^2 \frac{|S_{21}|^2 - 2 \cdot |S_{21}| \cdot \cos(\beta_{\text{opt}}^\mu L) + 1}{(\ln |S_{21}|)^2 + (\beta_{\text{opt}}^\mu L)^2} \right], \quad (2)$$

$$\beta_{\text{opt}}^\mu = \frac{\omega}{c}(n_m - n_o), \quad (3)$$

$$H = \frac{Z_C - Z_{\text{in}}}{Z_C + Z_{\text{in}}}, \quad (4)$$

where S_{21} is the electrical forward transmission coefficient in linear scale, which represents the contribution from RF loss;

β_{opt}^μ is the wavevector (velocity) mismatch term as defined in Eq. (3); and H characterizes the mmWave reflection due to the mismatch between the input impedance of the transmission line, Z_{in} , and that of the driving circuit, Z_C , as defined in Eq. (4).

Ideally, when velocity-matching and impedance-matching conditions are met, both the mismatch terms H and $\beta_{\text{opt}}^\mu L$ are equal to zero. The EO S_{21} is then only determined by the electrical S_{21} value. Numerically, the 3-dB and 6-dB electro-optic bandwidths correspond to the frequencies at which the electrical S_{21} responses roll off by 6.41 dB and 13.8 dB, respectively. The EO S_{21} response rolls off slower than the electrical S_{21} since the former captures the average modulation voltage along the transmission line, whereas the latter corresponds to the transmitted electrical power at the output port.

The absolute RF V_π values could then be calculated from the EO S_{21} parameter and the low-frequency V_π value using

$$V_{\pi,\text{RF}} = V_{\pi,\text{LF}} \times 10^{-\text{EO } S_{21}/20}. \quad (5)$$

The DC/low-frequency V_π values in most TFLN modulators reported to date follow voltage-length products ($V_\pi L$) in the range of 2–3 V cm [11,13,14], in order to achieve a good balance between electro-optic overlap and metal-induced optical loss. The $V_\pi L$ product in the devices characterized in this work is 2.3 V cm at DC and 2.67 V cm at 1 GHz, consistent with other previous demonstrations. The $V_\pi L$ product could potentially be further reduced by material engineering or novel modulation structures, while the design methodologies introduced in this paper for mmWave-band operation shall remain largely the same.

Following the above theory, the requirements and trade-offs below should be considered when designing a broadband TFLN mmWave-optic modulator.

(1) Velocity matching between optical and mmWave could be achieved by fine-tuning the buried and cladding oxide thickness. A thicker buried (cladding) oxide layer pushes the mmWave mode [Fig. 1(d)] away from the high-index Si substrate (low-index air), therefore decreasing (increasing) the mmWave effective index.

We numerically simulate the electrical characteristics of the mmWave transmission line using finite element method (FEM, Ansys HFSS) and extract the mmWave effective index (n_m) from the numerically converged propagation constant. Figure 2(a) shows the simulated mmWave dispersion curve for different cladding SiO₂ thicknesses. Our model assumes a dielectric constant of 5.5 for the cladding SiO₂ from plasma-enhanced chemical vapor deposition (PECVD), which is inferred from the actual electrical measurements to be discussed in Section 3. The optical group index (n_o) does not change significantly for the fundamental TE mode in our TFLN waveguides, is simulated to be 2.26 [dashed green line in Fig. 2(a)] (Ansys Lumerical Mode), and is insensitive to the buried/cladding oxide thickness. At a cladding thickness of 600 nm and a buried oxide thickness of 2 μm [solid yellow line in Fig. 2(a)], the mmWave transmission line exhibits phase velocities well matched with the optical group velocity throughout the mmWave band. This set of parameters is used for the actual devices in this work.

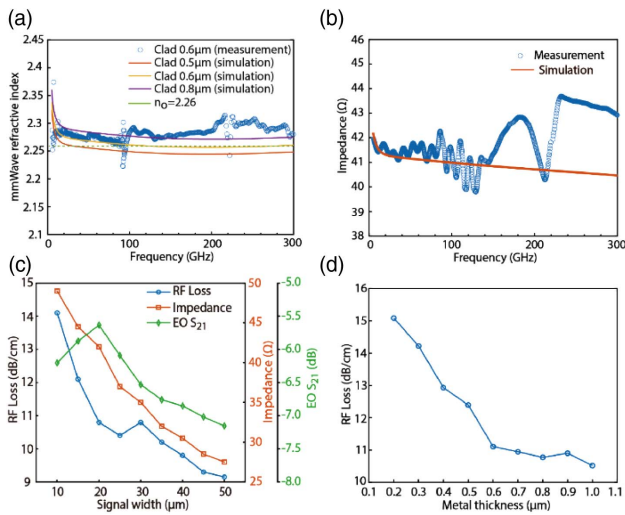


Fig. 2. (a) The simulated mmWave effective (phase) indices for various cladding thicknesses (solid lines), and the actual indices extracted from measured s -parameters (circles) as functions of frequency. The green dashed line shows the simulated optical group index, indicating good velocity matching in the fabricated device. (b) The simulated and extracted characteristic impedance of the device. (c) The simulated RF loss and characteristic impedance, as well as calculated EO S_{21} (assuming velocity matching) for various signal widths at 250 GHz, indicating an optimal signal width of 20 μm. (d) The simulated RF loss versus metal thickness at 250 GHz.

(2) The signal width of the mmWave transmission line should be carefully chosen to balance the trade-off between impedance matching and RF loss. According to common transmission line theory, the characteristic impedance $Z_0 = (L/C)^{1/2}$ is determined by the capacitance per unit length C and the inductance per unit length L . Using a wider signal line could effectively reduce the ohmic loss but at the same time increases the capacitance between the signal and ground and reduces the inductance, leading to lower and often unmatched impedance.

We use the same HFSS model to extract the RF loss and characteristic impedance at 250 GHz as a function of the signal width, which clearly shows a trade-off between the two [Fig. 2(c)]. Due to meshing-related uncertainties of the software, the simulated RF loss values fluctuate slightly, which does not affect the overall trend. It should be noted that impedance mismatch within a certain range does not significantly affect the modulation performance. For example, a 40-Ω characteristic impedance corresponds to an ~11% drop in the modulation voltage. As a result, the best electro-optic response may not occur at the exact impedance-matched point. The green line of Fig. 2(c) shows our calculated electro-optic responses at 250 GHz based on the calculated RF loss and impedance (assuming velocity matching), indicating a maximum electro-optic response at a signal width of 20 μm, which we use in the actual devices. More advanced transmission line structures like capacitive loading have recently shown the capability to break this trade-off at frequencies below 100 GHz [14,16,27–29], which could potentially be further extended into the upper mmWave bands using smaller capacitive loading periods to

increase the cut-off frequency. Nevertheless, the design methodology and characterization techniques introduced in this paper shall still apply to such more advanced modulator designs.

(3) A thicker metal layer could be used to reduce the ohmic loss of the transmission line, as far as the fabrication process allows. However, metal thicknesses beyond 800 nm do not quite benefit operations at upper mmWave frequencies since the skin depth at, for example, 250 GHz, is only 150 nm, as Fig. 2(d) shows. In our devices, to be discussed next, we chose 800 nm for the metal thickness. The metal thickness also slightly shifts the mmWave velocity and impedance, which could be fine-tuned using the methods discussed above in points 1 and 2.

(4) A longer modulation length leads to faster EO S_{21} roll-off due to larger RF losses, and thus smaller 3-dB and 6-dB bandwidths. However, for practical applications at certain mmWave frequencies, the more important parameter is the absolute modulation efficiency, i.e., RF V_π . In the ideal case where velocity is perfectly matched, a longer modulation length always leads to lower RF V_π , since even the much-attenuated sections still contribute to the total modulation effect. However, longer electrodes in an actual device are more sensitive to any velocity mismatches, as can be seen in Eq. (2). In this paper, we evaluate modulators with two different lengths, i.e., 5.8 mm and 10.8 mm, which show a good balance between the achievable RF V_π and the tolerance to fabrication variations.

We note that the actual electrical parameters often deviate from the simulated values due to deviations in actual fabrication parameters and material properties. Therefore, it is important to perform a careful electrical evaluation of the fabricated mmWave transmission lines and fine tune the theoretical model to achieve the desired modulation performances in the full electro-optic devices, which we discuss next.

3. EXPERIMENTS

A. Device Fabrication

The devices are fabricated on a TFLN wafer from NANOLN consisting of a 600-nm-thick X -cut LN bonded on top of thermal oxide (2-μm-thick) on a 500-μm-thick silicon substrate. We use electron-beam lithography (EBL) to define the optical waveguide patterns in hydrogen silsesquioxane (HSQ) and transfer the patterns into the TFLN by dry etching 300 nm of the LN film using an argon ion (Ar^+)-based reactive ion etching (RIE) process [13]. Then, we deposit a metal layer (800-nm-thick copper terminated with 30-nm-thick gold on top) to form the transmission lines through aligned photolithography, evaporation, and lift-off processes. Compared with gold electrodes, copper exhibits slightly higher electrical conductivity, has lower costs, and has better adhesion with LN, but it requires a termination layer on top to prevent long-term oxidation. The transmission line signal width is 20 μm and the gap between electrodes is 5 μm. The rib optical waveguide is 1.2-μm-wide on top in the modulation region and 0.8-μm-wide for routing, with a 300-nm-thick slab. The chip is cladded with 0.6-μm-thick silica by PECVD. The silica cladding is selectively removed at probe contact areas by another photolithography process followed by RIE. Finally, the edge of the chip is diced and polished to enhance the coupling

between the fiber and the chip. Figure 1(e) shows the top view of a fabricated mmWave-optic modulator under an optical microscope.

B. Characterizations of Device Electrical Properties

We first perform a detailed electrical analysis of the fabricated mmWave-optic modulators. We measure the reflection (S_{11}) and transmission (S_{21}) s -parameters of the transmission line from 10 MHz to 325 GHz using a vector network analyzer (VNA, with direct testing capability up to 90 GHz) combined with frequency extension modules in the 90–140 GHz, 140–220 GHz, and 220–325 GHz bands, respectively. A pair of mmWave GSG probes, calibrated using short-open-load-thru (SOLT) standards, is used to launch mmWave signals into the input port of the transmission line and to collect them from the output port. Results measured from different frequency bands are finally plotted all in the same figure. Figure 3(a) shows the measured S_{11} and S_{21} parameters of the 5.8-mm- and 10.8-mm-devices, respectively. The slight discontinuation near 220 GHz is likely due to calibration uncertainties of the mmWave probes in different bands. As expected, the transmitted power rolls off at higher frequencies, with a measured loss of 1.3 dB/mm at 250 GHz. From the measured s -parameters, we can extract the electrical loss coefficient α of the transmission line, as shown in Fig. 3(b). The electrical loss comes from two origins: the conductor loss α_c , which is typically proportional to the square root of the frequency, and the dielectric loss α_d , which goes linearly with the frequency. The total electrical loss for an electrode length L could then be modeled as $(\alpha_c\sqrt{f} + \alpha_d f)L + A$, where A is the intercept loss at the DC originating from the impedance mismatch and is equal to 2.6 dB in this case. Based on our measured results, we estimate that $\alpha_c = 0.42 \text{ dB cm}^{-1} \text{ GHz}^{-1/2}$ and $\alpha_d = 0.025 \text{ dB cm}^{-1} \text{ GHz}^{-1}$. The main loss mechanism at frequencies below 50 GHz is conductor loss, consistent with previous reports [14]. However, at upper mmWave bands, the dielectric loss contribution becomes more significant and should not be ignored, as the gap between the two fitted lines in Fig. 3(b) shows. The measured electrical loss is even larger than our model at above 200 GHz, possibly because the dielectric loss tangent increases at higher frequencies while our model assumes a fixed loss tangent. At these frequencies, there also exist resonance-like features likely due to the reflections at the two ends of the transmission lines. The extracted α_d gives rise to an

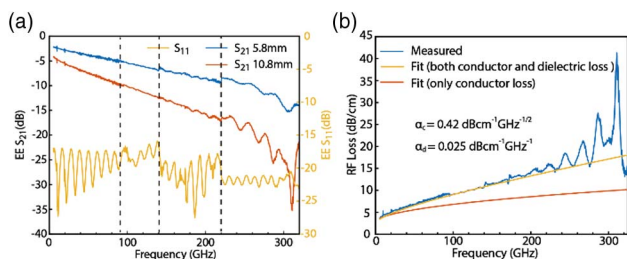


Fig. 3. (a) Measured s -parameters of the mmWave transmission lines with lengths of 5.8 and 10.8 mm. (The dashed lines indicate the boundaries of our measurement bands.) (b) Extracted and fitted electrical loss coefficient of the transmission line as a function of frequency.

average dielectric loss tangent of 0.012 for this transmission line mode, which is consistent with the loss tangents of the dielectric involved here, i.e., 0.013 for silicon [30], 0.008 for LN [31], and 0.006 for deposited SiO_2 [32].

Apart from the RF losses, it is important to extract the actual mmWave velocity and impedance in the fabricated devices in order to fulfill and verify the design guidelines in Section 2. The mmWave index n_m is extracted by $n_m = \frac{\beta c}{2\pi\omega}$ (β is the propagation constant extracted from the measured phase response).

The impedance is extracted by $Z_0 = Z_C \sqrt{\frac{(1+S_{11})^2 - S_{21}^2}{(1-S_{11})^2 - S_{21}^2}}$. The

circles in Figs. 2(a) and 2(b) show the extracted n_m and Z_C values at frequencies up to 300 GHz, both of which match well with the designed numbers. The difference between the measured and target n_m is 0.02 at 150 GHz and 0.04 at 250 GHz, allowing for a reasonably well-matched velocity within the entire frequency range of interest. The extracted Z_C is 41.5Ω at 250 GHz, which is also close to the simulated result (40.5Ω). The extracted values see relatively large fluctuations at certain frequencies since the extension modules exhibit degraded performances near the edges of each measurement band. The remaining differences between the measured and simulated n_m and Z_{in} values could result from deviations in the fabricated device's structural parameters and measurement uncertainties. Nevertheless, the ability to extract the actual velocity, impedance, and loss information of the mmWave transmission line serves as an invaluable asset for predicting and explaining the modulation performances at mmWave frequencies, as we show next.

C. Characterizations of Device Electro-Optic Properties

We measure the electro-optic responses of our TFLN mmWave-optic modulators using the setup shown in Fig. 4. A wavelength-tunable laser source (Santec TSL-550, 1500–1630 nm) is used to input light in the telecom L-band. A 3-paddle fiber polarization controller (FPC) is used to ensure the TE mode excitation. Light is coupled into and out from the chip using a pair of lensed fibers. Measurements are separately

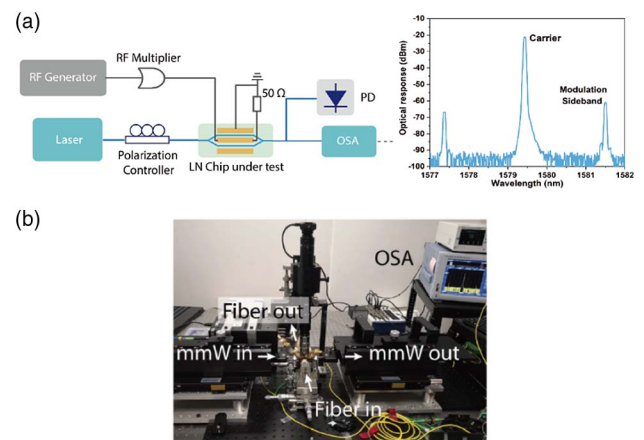


Fig. 4. (a) Schematic diagram and (b) photo of the measurement setup for characterizing electro-optic responses at frequencies up to 325 GHz.

conducted in four frequency bands. For the lowest band (<67 GHz), modulation electrical signals are directly generated from an RF generator (MG3697C, Anritsu). For higher frequencies (>67 GHz), microwave signals are generated by up-conversion, where 250 kHz–20 GHz signals (Agilent E8267D) are up-converted and amplified by frequency multipliers in the respective bands, i.e., 65–110 GHz, 90–140 GHz, and 220–325 GHz. A pair of mmWave probes is used to deliver the modulation signal to the input port of the transmission line and to terminate the output port with a 50- Ω -load. The modulator is biased at the quadrature point, resulting in an output optical signal with two sidebands separated from the carrier by the mmWave frequency [inset of Fig. 4(a)]. The electro-optic response is tested by monitoring the power ratio between the sideband and the carrier, using an optical spectrum analyzer (OSA), which we define as the normalized sideband power P_s ,

$$P_s = \frac{P_{\text{carrier}}}{P_{\text{sideband}}}. \quad (6)$$

In Fig. 4(a), we could see that the upper and lower sidebands show slightly different powers. This is because at ultrahigh modulation frequencies, the modulated sidebands are significantly away from the carrier such that they experience a shifted bias point in the unbalanced MZI. In this case, we take the average power of the two sidebands, which allows the below analysis to hold in the presence of the unbalanced sidebands.

We could therefore calculate the RF V_π using Eq. (7) [15],

$$V_{\pi,\text{RF}} = \frac{1}{4}\pi V_p \sqrt{P_s}, \quad (7)$$

where V_p is the peak voltage of the input mmWave signal, which is measured by using a mmWave power meter at each frequency point and carefully calibrated by excluding the losses from the input mmWave waveguide and the probe.

Based on the extracted RF V_π values and the V_π at 1 GHz ($V_{\pi,\text{LF}}$), we could further calculate the EO S_{21} responses using Eq. (5).

Figure 5 shows the extracted RF V_π and EO S_{21} at frequencies up to 325 GHz for the 10.8-mm-device and the 5.8-mm-device (blue circles and dashed lines), plotted together with the ones calculated from the measured electrical parameters (red lines) in Section 3.B following Eq. (2). The raw measured electro-optic responses (blue circles) show substantial fluctuations, which are mostly due to uncertainties in the quoted V_p in Eq. (7). The mmWave multiplier often generates spurious harmonics away from the intended frequency, which may also be counted by the power meter. Nonetheless, processing the raw measured data with a simple smoothing function readily allows us to see the overall frequency-response trends and reliably measure the actual electro-optic responses at frequency points of interest (dashed lines). Most importantly, the direct electro-optic measurements show excellent agreement with the calculated results, thanks to the precise measurements of the velocity, the impedance, and the mmWave loss we have performed.

Our measurement results indicate that the 5.8-mm-device features ultrahigh 3-dB and 6-dB electro-optic bandwidths

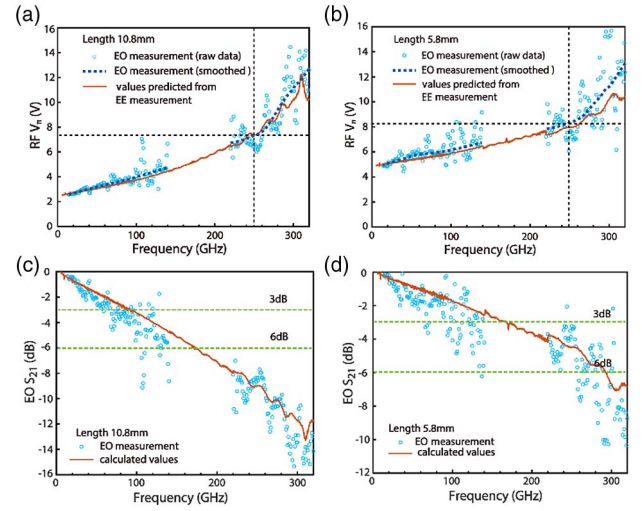


Fig. 5. (a), (b) Measured and calculated modulator RF V_π of the (a) 10.8-mm- and (b) 5.8-mm-devices. (c), (d) Measured and calculated electro-optic responses of the (c) 10.8-mm- and (d) 5.8-mm-devices. Blue circles correspond to the raw measured data directly extracted from the electro-optic sideband measurements. Dashed lines show smoothed values for better comparison with the calculated values. Red lines are calculated based on the n_m and Z_C values from the measured electrical s -parameters.

of 170 GHz and 295 GHz, respectively [Fig. 5(d)]. The bandwidths of the 10.8-mm-device are relatively lower, i.e., 100 GHz (3 dB) and 175 GHz (6 dB), due to more severe RF attenuation [Fig. 5(c)]. Still, the 10.8-mm-device provides lower RF V_π than that of the 5.8-mm-device throughout the entire mmWave band for the reasons discussed in Section 2 and could be more appealing in most application scenarios. The measured RF V_π values are 7.3 V for the 10.8-mm-device and 8.3 V for the 5.8-mm-device [Figs. 5(a) and 5(b)] at an ultrahigh mmWave frequency of 250 GHz, making these devices highly relevant for practical applications. In comparison, the RF V_π of a typical commercial LN modulator could be as high as 15 V at 100 GHz (3.8 V in our device), as measured in Ref. [33].

4. DISCUSSION

The absolute RF V_π is usually more important for practical applications as it determines the actual mmWave-optic conversion efficiency. As presented above, a longer modulator length should always lead to lower V_π as long as the velocity matching condition could be fulfilled, which, however, becomes increasingly more vulnerable for longer electrodes and higher frequencies. Figure 6 shows the calculated RF V_π values as functions of device length and velocity (index)/impedance mismatch at 250 GHz. The current devices (yellow dots) operate along the yellow line with a slight index mismatch of $\Delta n = 0.04$. Along this line, the RF V_π first decreases and then increases as the modulator length increases, indicating that there exists an optimal modulation length that provides the lowest RF V_π (in this case, 6.3 V at 1.15 cm). If perfect velocity matching could be achieved, then the RF V_π shall monotonically

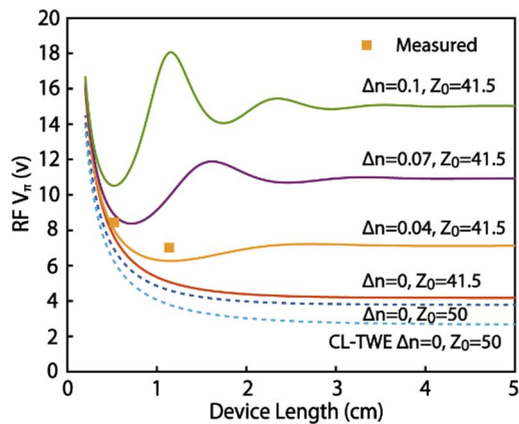


Fig. 6. Simulated RF V_{π} versus device length for various velocity- and impedance-mismatch conditions at 250 GHz. The yellow dots correspond to the 5.8-mm- and 10.8-mm-devices in this work. The bottom dashed line corresponds to a capacitive-loaded traveling-wave electrode (CL-TWE), whereas the rest correspond to normal traveling-wave electrodes.

decrease following the red line, potentially achieving an RF V_{π} of 4.2 V at 250 GHz for a device length of 1.5 cm. This performance envelope could be further improved by satisfying the velocity- and impedance-matching conditions simultaneously (dark blue dashed line), which is currently not possible for a reasonably wide signal line but could potentially be achieved using a capacitive-loaded electrode structure. Assuming a reduced conductor loss of $0.19 \text{ dB cm}^{-1} \text{ GHz}^{-1/2}$ for a typical capacitive-loaded electrode on quartz substrate [16] and the same dielectric loss as that measured in this work, the RF V_{π} values could possibly be further reduced to 2.7 V at 250 GHz (light blue dashed line in Fig. 6). It should be noted, though, that the actual mmWave-optic modulation performance could somewhat differ from this line, since the actual dielectric loss depends on the substrate used (silicon versus quartz), whereas the conductor loss could deteriorate when the capacitive-loading periods are made smaller than those used in Refs. [14,16,27–29] in order to extend the cutoff frequencies into upper mmWave frequencies. These parameters, together with the actual velocity and impedance values, could nevertheless be determined using the same electrical measurements and modeling methodologies as described in this work.

5. CONCLUSION

In this paper, we report a detailed theoretical and experimental analysis of the mmWave-optic modulation performances of TFLN modulators at frequencies up to 325 GHz. We show that the ability to reliably extract the actual mmWave velocity and impedance in the fabricated devices is key to an accurate and systematic design optimization at these ultrahigh frequencies. We show that an optimized 5.8-mm-long modulator could provide a measured 3-dB electro-optic bandwidth of 170 GHz and a 6-dB bandwidth of 295 GHz. The devices also show RF half-wave voltages as low as 7.3 V at an ultrahigh modulation frequency of 250 GHz. The design and characterization methodologies in this work could be readily applied to

more advanced modulator architectures as well as other material platforms. The ultra-broadband low V_{π} mmWave-optic modulators could become key elements in future mmWave systems for wireless communications, short-range radar, and sensor applications.

Funding. National Natural Science Foundation of China (61922092); Research Grants Council, University Grants Committee (CityU 11204820, CityU 21208219, T42-103/16-N); Croucher Foundation (9509005); City University of Hong Kong (9610402, 9610455); Central Research Fund (CRF); Agency for Science, Technology and Research (A*STAR); Harvard Quantum Initiative (HQI) Postdoctoral Fellowship.

Disclosures. The authors declare no conflicts of interest.

Data Availability. The data in this study are available from the corresponding author on reasonable request.

REFERENCES

- J. Lien, N. Gillian, M. E. Karagozler, P. Amihoud, C. Schwesig, E. Olson, and H. Raja, and I. Poupayev, "Soli: Ubiquitous gesture sensing with millimeter wave radar," *ACM Trans. Graph.* **35**, 1–19 (2016).
- D. Marpaung, J. Yao, and J. Capmany, "Integrated microwave photonics," *Nat. Photonics* **13**, 80–90 (2019).
- H. Murata, "Millimeter-wave-band electro-optic modulators using antenna-coupled electrodes for microwave photonic applications," *J. Lightwave Technol.* **38**, 5485–5491 (2020).
- T. Nagatsuma, S. Hisatake, M. Fujita, H. H. N. Pham, K. Tsuruda, S. Kuwano, and J. Terada, "Millimeter-wave and terahertz-wave applications enabled by photonics," *IEEE J. Quantum Electron.* **52**, 0600912 (2016).
- Y. Ogiso, J. Ozaki, Y. Ueda, H. Wakita, M. Nagatani, H. Yamazaki, M. Nakamura, T. Kobayashi, S. Kanazawa, Y. Hashizume, H. Tanobe, N. Nunoya, M. Ida, Y. Miyamoto, and M. Ishikawa, "80-GHz bandwidth and 1.5-V V_{π} InP-based IQ modulator," *J. Lightwave Technol.* **38**, 249–255 (2020).
- C. Han, M. Jin, Y. Tao, B. Shen, H. Shu, and X. Wang, "Ultra-compact silicon modulator with 110 GHz bandwidth," in *Optical Fiber Communications Conference* (2022), paper Th4C.5.
- S. Ummethala, T. Harter, K. Koehnle, Z. Li, S. Muehlbrandt, Y. Kutuvantavida, J. Kemal, P. Marin-Palomo, J. Schaefer, A. Tessmann, S. K. Garlapati, A. Bacher, L. Hahn, M. Walther, T. Zwick, S. Randel, W. Freude, and C. Koos, "THz-to-optical conversion in wireless communications using an ultra-broadband plasmonic modulator," *Nat. Photonics* **13**, 519–524 (2019).
- E. Heidari, H. Dalir, F. M. Koushyar, B. M. Nouri, C. Patil, M. Miscuglio, D. Akinwande, and V. J. Sorger, "Integrated ultra-high-performance graphene optical modulator," *Nanophotonics* **11**, 4011–4016 (2022).
- D. Zhu, L. Shao, M. Yu, R. Cheng, B. Desiatov, C. J. Xin, Y. W. Hu, J. Holzgrafe, S. Ghosh, A. Shams-Ansari, E. Puma, N. Sinclair, C. Reimer, M. Zhang, and M. Loncar, "Integrated photonics on thin-film lithium niobate," *Adv. Opt. Photon.* **13**, 242–352 (2021).
- A. N. R. Ahmed, S. Nelan, S. Shi, P. Yao, A. Mercante, and D. W. Prather, "Subvolt electro-optical modulator on thin-film lithium niobate and silicon nitride hybrid platform," *Opt. Lett.* **45**, 1112–1115 (2020).
- X. Liu, B. Xiong, C. Sun, J. Wang, Z. Hao, L. Wang, Y. Han, H. Li, J. Yu, and Y. Luo, "Wideband thin-film lithium niobate modulator with low half-wave-voltage length product," *Chin. Opt. Lett.* **19**, 060016 (2021).
- M. Xu, M. He, H. Zhang, J. Jian, Y. Pan, X. Liu, L. Chen, X. Meng, H. Chen, Z. Li, X. Xiao, S. Yu, S. Yu, and X. Cai, "High-performance coherent optical modulators based on thin-film lithium niobate platform," *Nat. Commun.* **11**, 3911 (2020).
- C. Wang, M. Zhang, X. Chen, M. Bertrand, A. Shams-Ansari, S. Chandrasekhar, P. Winzer, and M. Loncar, "Integrated lithium niobate

- electro-optic modulators operating at CMOS-compatible voltages," *Nature* **562**, 101–104 (2018).
14. P. Kharel, C. Reimer, K. Luke, L. He, and M. Zhang, "Breaking voltage–bandwidth limits in integrated lithium niobate modulators using micro-structured electrodes," *Optica* **8**, 357–363 (2021).
 15. A. J. Mercante, S. Shi, P. Yao, L. Xie, R. Weikle, and D. W. Prather, "Thin film lithium niobate electro-optic modulator with terahertz operating bandwidth," *Opt. Express* **26**, 14810–14816 (2018).
 16. G. Chen, K. Chen, R. Gan, Z. Ruan, Z. Wang, P. Huang, C. Lu, A. P. T. Lau, D. Dai, C. Guo, and L. Liu, "High performance thin-film lithium niobate modulator on a silicon substrate using periodic capacitively loaded traveling-wave electrode," *APL Photon.* **7**, 026103 (2022).
 17. P. O. Weigel, J. Zhao, K. Fang, H. Al-Rubaye, D. Trotter, D. Hood, J. Mudrick, C. Dallo, A. T. Pomerene, A. L. Starbuck, C. T. DeRose, A. L. Lentine, G. Rebeiz, and S. Mookherjee, "Bonded thin film lithium niobate modulator on a silicon photonics platform exceeding 100 GHz 3-dB electrical modulation bandwidth," *Opt. Express* **26**, 23728–23739 (2018).
 18. H. Feng, K. Zhang, W. Sun, Y. Ren, Y. Zhang, W. Zhang, and C. Wang, "Ultra-high-linearity integrated lithium niobate electro-optic modulators," arXiv:2202.12739 (2022).
 19. Y. He, Q.-F. Yang, J. Ling, R. Luo, H. Liang, M. Li, B. Shen, H. Wang, K. Vahala, and Q. Lin, "Self-starting bi-chromatic LiNbO₃ soliton micro-comb," *Optica* **6**, 1138–1144 (2019).
 20. M. Zhang, B. Buscaino, C. Wang, A. Shams-Ansari, C. Reimer, R. Zhu, J. M. Kahn, and M. Loncar, "Broadband electro-optic frequency comb generation in a lithium niobate microring resonator," *Nature* **568**, 373–377 (2019).
 21. A. Prencipe, M. A. Baghban, and K. Gallo, "Tunable ultranarrowband grating filters in thin-film lithium niobate," *ACS Photon.* **8**, 2923–2930 (2021).
 22. K. Abdelsalam, E. Ordouie, M. G. Vazimali, F. A. Juneghani, P. Kumar, G. S. Kanter, and S. Fathpour, "Tunable dual-channel ultra-narrowband Bragg grating filter on thin-film lithium niobate," *Opt. Lett.* **46**, 2730–2733 (2021).
 23. J.-X. Zhou, R.-H. Gao, J. Lin, M. Wang, W. Chu, W.-B. Li, D.-F. Yin, L. Deng, Z.-W. Fang, J.-H. Zhang, R.-B. Wu, and Y. Cheng, "Electro-optically switchable optical true delay lines of meter-scale lengths fabricated on lithium niobate on insulator using photolithography assisted chemo-mechanical etching," *Chin. Phys. Lett.* **37**, 084201 (2020).
 24. C. Op de Beeck, F. M. Mayor, S. Cuyvers, S. Poelman, J. F. Herrmann, O. Atalar, T. P. McKenna, B. Haq, W. Jiang, J. D. Witmer, G. Roelkens, A. H. Safavi-Naeini, R. Van Laer, and B. Kuyken, "III/V-on-lithium niobate amplifiers and lasers," *Optica* **8**, 1288–1289 (2021).
 25. Z. Chen, Q. Xu, K. Zhang, W.-H. Wong, D.-L. Zhang, E. Y.-B. Pun, and C. Wang, "Efficient erbium-doped thin-film lithium niobate waveguide amplifiers," *Opt. Lett.* **46**, 1161–1164 (2021).
 26. C. Wang, M. Zhang, B. Stern, M. Lipson, and M. Loncar, "Nanophotonic lithium niobate electro-optic modulators," *Opt. Express* **26**, 1547–1555 (2018).
 27. X. Liu, B. Xiong, C. Sun, Z. Hao, L. Wang, J. Wang, Y. Han, H. Li, and Y. Luo, "Capacitively-loaded thin-film lithium niobate modulator with ultra-flat frequency response," *IEEE Photon. Technol. Lett.* **34**, 854–857 (2022).
 28. X. Liu, B. Xiong, C. Sun, J. Wang, Z. Hao, L. Wang, Y. Han, H. Li, and Y. Luo, "Sub-terahertz bandwidth capacitively-loaded thin-film lithium niobate electro-optic modulators based on an undercut structure," *Opt. Express* **29**, 41798–41807 (2021).
 29. M. Xu, Y. Zhu, F. Pittalà, J. Tang, M. He, W. Ng, J. Wang, Z. Ruan, X. Tang, M. Kuschnerov, L. Liu, S. Yu, B. Zheng, and X. Cai, "Dual-polarization thin-film lithium niobate in-phase quadrature modulators for terabit-per-second transmission," *Optica* **9**, 61–62 (2022).
 30. M. Wan, Y. Yashchyshyn, X. Li, K. Godziszewski, D.-W. Sun, and J. Sheridan, "Characterization of silicon in the terahertz," *Proc. SPIE* **11279**, 112792D (2020).
 31. M. Lee, "Dielectric constant and loss tangent in LiNbO₃ crystals from 90 to 147 GHz," *Appl. Phys. Lett.* **79**, 1342–1344 (2001).
 32. D. Li, J. Gao, J. E. Austermann, J. A. Beall, D. Becker, H. M. Cho, A. E. Fox, N. Halverson, J. Henning, G. C. Hilton, J. Hubmayr, K. D. Irwin, J. V. Lanen, J. Nibarger, and M. Niemack, "Improvements in silicon oxide dielectric loss for superconducting microwave detector circuits," *IEEE Trans. Appl. Supercond.* **23**, 1501204 (2013).
 33. P. T. Dat, Y. Yamaguchi, K. Inagaki, M. Motoya, S. Oikawa, J. Ichikawa, A. Kanno, N. Yamamoto, and T. Kawanishi, "Transparent fiber–radio–fiber bridge at 101 GHz using optical modulator and direct photonic down-conversion," in *Optical Fiber Communications Conference* (2021), pp. 1–3.